

## LUXLINE™

2016/182/5

Indoor Series

## HIGH BRIGHTNESS &amp; FLEXIBILITY

To brilliantly illuminate tight, compact spaces, we offer our slim 5mm **LUXLINE™ LED Strip 2016/182/5**. This light strip solution features 182 LEDs with high brightness, an outstanding color rendering index of 90+ for uncompromised color quality, and impeccable evenness. Featuring a slim width and compact profile, this LED strip may be cut and curved to snugly fit highly customized and narrow applications without sacrificing performance. Great for applications requiring minimal spacing between the LED and diffuser material.



## KEY FEATURES

OPTIMAL COLOR  
RENDERINGOUTSTANDING  
BRIGHTNESSLONG LED  
LIFESPANWIDE BEAM  
ANGLE

Slim. Bright. Flexible.



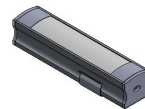
FLEX &amp; CURVE

SLIM WIDTH  
(5mm)

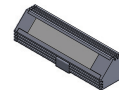
CUTTABLE

80% ENERGY  
EFFICIENTCUSTOM  
LENGTHSCUSTOM  
COLOR TEMPSCONSTANT  
VOLTAGECONSISTENT  
LIGHT COLOR

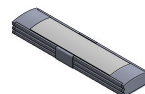
## COMPATIBLE LUXLINEAR TUBES



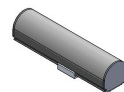
Normal 1715



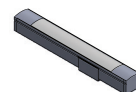
Corner 1919



Low 1707



Round 2019



Slim 1008

## ASSURED QUALITY



E477011



100% QC

LIMITED  
WARRANTY

PROJECT NAME/NO.	PART NUMBER
SPECIFIED BY	NOTE

## LUXLINE™

2016/182/5

Indoor Series

## MECHANICAL

## PARAMETERS

**LED Type** EPISTAR 2016 SMD LED**LED Count** 49 LEDs/ft (182 LEDs/m)**LED Strip Dimensions** 0.20" (w) x 0.09" (h) [5mm (w) x 2.2mm (h)]**LED Pitch** 0.21" (5.33mm)**LED Strip Width** 0.20" (5mm)**LED Node Size** 2016**Max. Run** 8.2ft (2.5m)**Roll Length** 16 ft <sup>3</sup>/<sub>8</sub> in (5m)

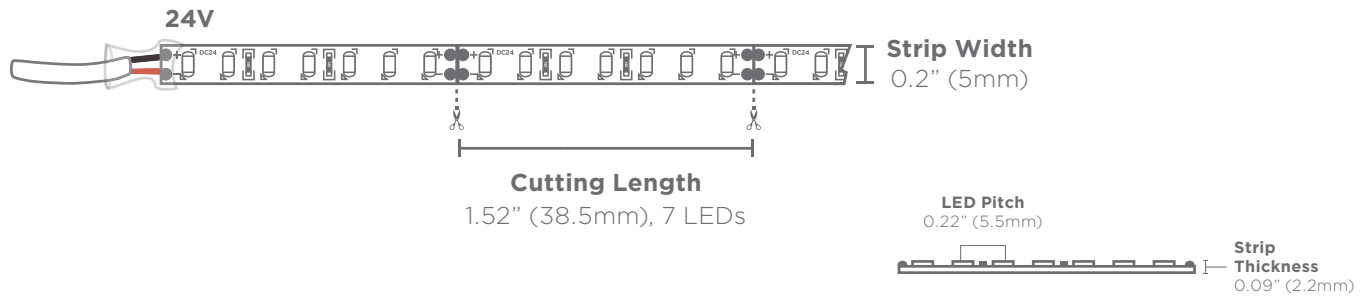
## CONSTRUCTION &amp; BASE MATERIAL

**Substrate Material** Flexible PET**Metal Material** Rolled copper for PCB flexibility

## COMPLIANCE &amp; REGULATORY APPROVAL

UL E477011 • cUL E477011 • RoHs • CE • Lead Free • Warranty 5 years

## LED STRIP CUTTING DIAGRAM



LED SIZE	OPERATING VOLTAGE	PITCH center-to-center	CUTTING LENGTH	WIDTH	# LEDs per cut section
2016	24V	0.21" 5.33mm	1.52" 38.5mm	0.20" 5mm	7

PROJECT NAME/NO.	PART NUMBER
SPECIFIED BY	NOTE

## LUXLINE™

2016/182/5

Indoor Series

## ELECTRICAL

## PHOTOMETRICS

**Wide Beam Angle** 120°**Lamp Life** 54,000+ hours**Color Rendering Index** 90+ across all color temperatures • 90+ available upon request**Standard Color Temperatures** 3000K • 3250K • 4100K**Custom Color Temperatures** Available upon request**Lumen Output**<sup>1</sup> 241-256 lm/ft (790-840 lm/m)

## DIMMING

• Pulse-width modulation dimming (PWM)

• 0-10V dimming

• Magnetic low voltage (MLV)

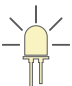
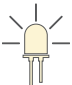
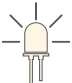
## POWER SUPPLY

**Input Voltage** 24VDC constant voltage**Input Current**<sup>2</sup> 0.12 A/ft (0.39 A/m)**Power Consumption** 2.85 W/ft (9.36 W/m)**Wire Size** 20 AWG 2 Wire**Please Use Only with Class 2 Power Supply****Connector Type** Molex® • DC Barrel Jack • Hardwire<sup>1</sup> Lumen output is measured according to PMS-80 with a tolerance of ±1mm<sup>2</sup> Input current for a single LED: 20mA

## SAFETY DISCLOSURES

**Electric Code Compliance** Please make sure to install LUXLINE in accordance with standard national and local electrical codes.**Outdoor Usage** LUXLINE is suitable for indoor applications.**Actual Product Color May Vary** Please note that the product color as seen in this specification sheet, photography, and related marketing material for this product may vary slightly from your actual customized product due to photographic and design limitations.**Specifications are Subject to Change Without Notice** While we try to make every effort to inform customers of updates to our products, we reserve the right to make modifications and improvements to our fixture specifications and designs without advance notice.**Manufacturer is Not Liable for Matching Fixtures to Pre-Existing****Fixture Installations** We cannot guarantee matching the CCT appearance, product design, or lumen output for pre-installed fixtures or reorders.

## PHOTOMETRIC DATA TABLE

	CCT	EFFICACY	BEAM ANGLE	LUMINOUS FLUX	POWER
	3000K Warm White	84.5 lm/W	120°	241 lm/ft 790 lm/m	
	3250K Warm White	86.7 lm/W		247 lm/ft 810 lm/m	2.85 W/ft 9.36 W/m
	4100K Neutral White	90 lm/W		256 lm/ft 840 lm/m	

Current  Compatible

- Energy Savings
- Versatile
- Scalable
- Outdoor Rated
- Wired, Wireless or Hybrid

Contact us to inquire about other compatible controls

PROJECT NAME/NO.	PART NUMBER
SPECIFIED BY	NOTE

# LUXLINE™

**2016/182/5**

Indoor Series

## INSTALLATION

**Field Cuttable** LUXLINE 2016/182/5 is fully field cuttable and may be cut horizontally or vertically along the designated cutting lines. This 24VDC strip may be cut every 1.52" (38.5mm) or every 7 LEDs. LUXLINE may be custom cut for many curved and space-sensitive projects.

**Environment** Indoor/dry location safe (IP22 rating). For best performance, avoid mounting LUXLINE LED strips in direct sunlight, near direct water contact, or by surfaces subject to puddling caused by rainfall or sprinkler sprays. Our craftsmen make every effort to customize and assemble your lighting solution. Even so, dust, debris, water, or moisture may still creep into the adjoining pieces over time.

**Custom IP Ratings Available for Outdoor Use** Outdoor/exterior application treatment for LUXLINE strips is available upon request. Available IP Ratings include IP65, IP67, and IP68. Please ask a Sales Rep for information.

**Ambient Temperature** -13°F - +158°F (-25°C - +70°C)

**Operating Temperature** -13°F - +140°F (-25°C - +60°C)

**Mounting** May be mounted with 3M adhesive. All LUXLINE strips feature 3M adhesive on the reverse side of the sheet.

**Heat Sink** Required for installation.

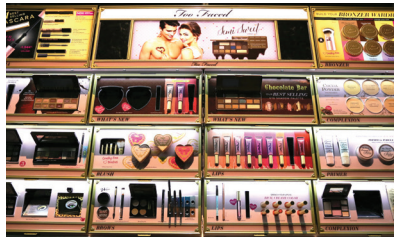
**Avoiding Hotspots** To prevent hotspots, we recommend installing LUXLINE at least 1-2" away from the diffuser or illuminated surface.

**Connectors** LUXLINE may be connected with Molex® connectors, DC barrel jack, or hardwire.

**Curved Applications** LUXLINE may be flexed for curved or radius applications to best fit your retail or architectural environment.

## APPLICATIONS

- Cove Lighting
- Indoor Accent Lighting
- Architectural Lighting
- Under Cabinet LED Lighting
- Showcase & Bookshelf Lighting
- Retail Merchandising Displays
- Illuminated POP Displays
- Path & Contour Marking
- Ultra slim LED light boxes & light panels
- Promotional Graphics
- Trade Shows & Exhibits
- Signage
- Ambient Lighting
- Ultra LED-slim light boxes & light panels
- ...And Many More!



ILLUMINATED POP DISPLAYS



LUXURY RETAIL MERCHANDISING



INDOOR ACCENT LIGHTING

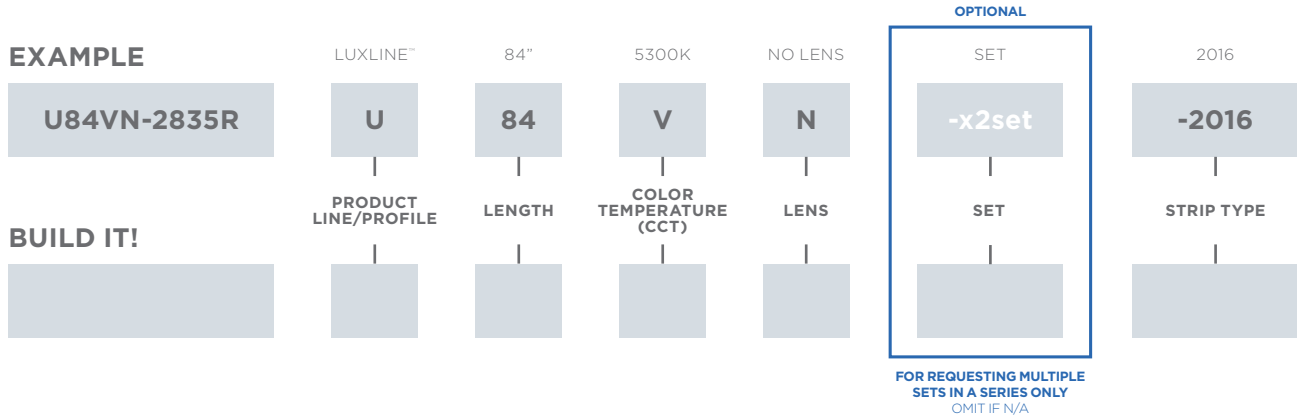
PROJECT NAME/NO.	PART NUMBER
SPECIFIED BY	NOTE

## LUXLINE™

2016/182/5

Indoor Series

## LUXLINE™ LIGHT STRIP PART NUMBER



## PRODUCT LINE

U LUXLINE™ LED LIGHT STRIP

## LENGTH (IN INCHES)

LL LENGTH

## COLOR TEMPERATURE (CCT)

Y 4100K

Z 3000K

C CUSTOM CCT

## LENS

N NO LENS

## SET (OPTIONAL)

-x2set SET (OMIT IF N/A)

-LED

-2016 2016/182/5 (5mm)

PROJECT NAME/NO.	PART NUMBER
SPECIFIED BY	NOTE