

LUXCANVAS™ Static White

RECESSED Indoor/Dry Location Series



An easy-to-install LED ceiling lighting solution that we provide fully assembled or assemble on-site for you! Many illuminated textiles require you to undergo the arduous task of assembly, but LEDCONN does this part for you to streamline the installation process. All you have to do is hook up the electrical components and you're good to go!

For your safety, please read and understand these instructions completely before starting installation and retain this guide for future reference. This guide applies to both LUXCANVAS™ and LUXCANVAS FLOAT™ recessed installations for static white color temperatures.

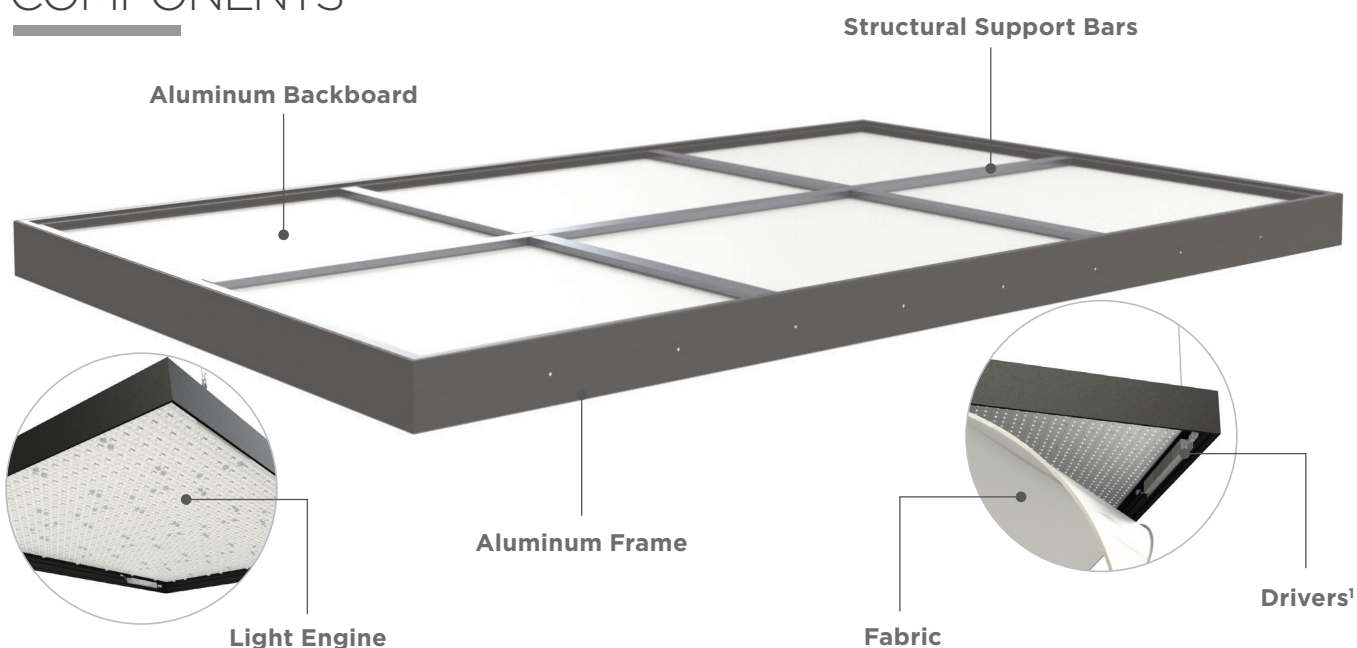


Recreate the effect of natural daylight without needing to open a window with our edgeless LUXCANVAS™ LED Luminous Ceiling luminaire. LUXCANVAS™ is a multifunctional, fully-assembled tension fabric luminaire that will transform your environment into open, brightly illuminated spaces. Boasting a clean, frameless look, this beautiful low-profile lighting fixture provides visual and emotional impact for wall and ceiling recessed applications.

Use recessed luminaires for

- Office lighting
- Showroom lighting
- Retail Environments
- Airports
- Museums

COMPONENTS



1 LUXCANVAS with remote power supplies will not contain integrated drivers inside the luminaire. For remote power supplies the driver will be mounted in a suitable location remotely from the luminaire.

LUXCANVAS™ Static White

RECESSED

Indoor/Dry Location Series

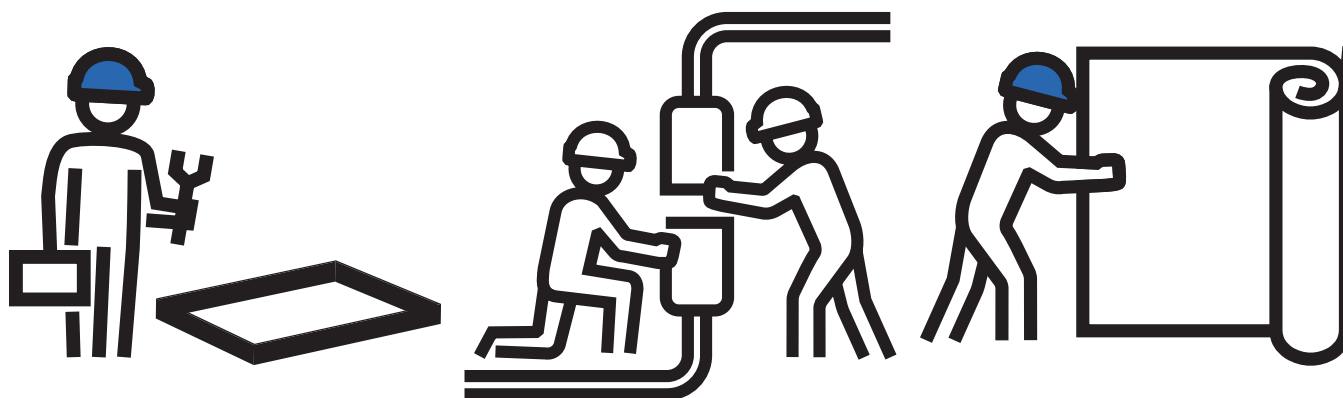


ASSEMBLY

Standard Shipment Assembly Standard sized LUXCANVAS will be shipped pre-built and fully assembled.

Oversize Shipment Assembly Due to logistical reasons, oversized LUXCANVAS are shipped to sites unassembled where on-site assembly by LEDCONN technicians is required. **General and Electrical contractors are responsible for the electrical and mounting installation of the assembled LUXCANVAS fixture.**

ON-SITE ASSEMBLY PROCEDURE BY LEDCONN TECHNICIANS FOR OVERSIZE LUXCANVAS



1) The LEDCONN technicians will arrive on-site and assemble the LUXCANVAS structure.

2) Your general and electrical contractors will lift the fixture, hang it, and hook up the electrical connections.

3) After installation is complete and the work space is clear and free of debris, LEDCONN technicians will install the fabric textile to the face of the LUXCANVAS fixture.

ELECTRICAL

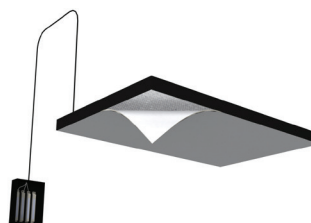
Route appropriate power connection(s) to installation location, performed by a qualified electrician.

WITH INTEGRATED POWER SUPPLIES/CONTROLS



- LUXCANVAS with integrated power supplies and controls contain light engines that are pre-connected to low voltage power supplies.
- With the breaker off, connect AC to the wire exits from the LUXCANVAS. Make sure to connect any dimming or control wires to your system.

WITH REMOTE POWER SUPPLIES/CONTROLS



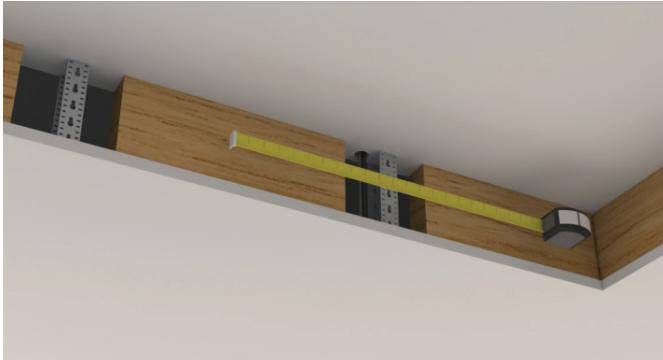
- LUXCANVAS with remote power supplies and controls will contain multiple low voltage wire exits connected to an array of low voltage light engines.
- Mount the electrical components in the desired location and route appropriate size and quantity of DC conductors from power supplies and controls to the LUXCANVAS.
- With the breaker off, connect electrical conductor leads to LUXCANVAS. Make sure to connect any dimming or control wires to your system.

LUXCANVAS™ Static White

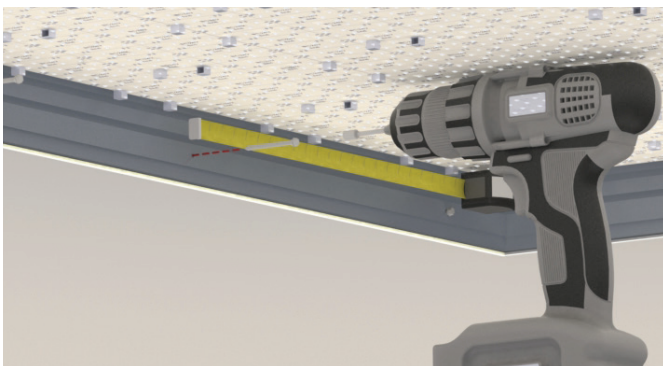
RECESSED Indoor/Dry Location Series



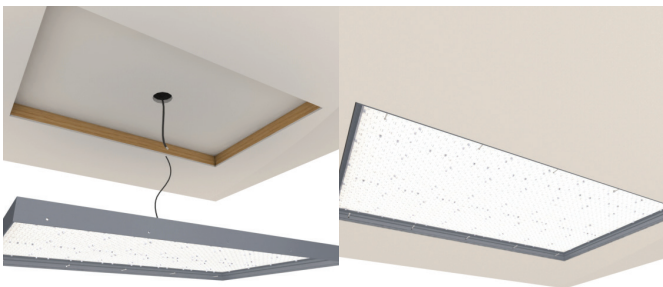
MOUNTING: RECESSED



Measure structural mounting points in the ceiling where the LUXCANVAS will be secured to.



Based on the locations of the structural points, pre-drill holes in the side wall of the LUXCANVAS frame, making sure to avoid any wiring or electrical components.



Make the final electrical connections using a qualified electrician in accordance to national and local electrical codes.

With sufficient manpower, lift the LUXCANVAS structure into the designated mounting location.

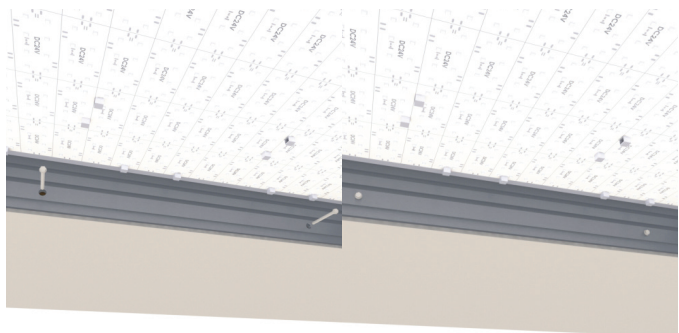
LUXCANVAS™ Static White

RECESSED

Indoor/Dry Location Series



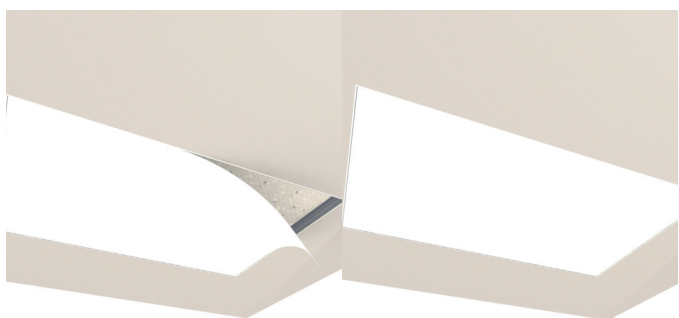
MOUNTING: RECESSED



Fasten the LUXCANVAS frame to the structural mounting points in the ceiling.



Apply mudding to seal the gaps between the aluminum frame and the ceiling structure.



After mudding has dried, install the fabric textile into the inside edges of the frame.

LUXCANVAS™ Static White

RECESSED Indoor/Dry Location Series



POWER & WIRING

Dimming accessories, split connectors, extension cords, and power supplies are available for purchase.

Before wiring to a power supply, always turn off electricity at the fuse or circuit breaker box.

ELECTRICAL POWER CONSIDERATIONS

- Use the supplied Class 2 power supply to power the LUXCANVAS. The warranty will be forfeited if a power supply not approved by LEDCONN is used.
- LUXCANVAS is offered with UL & cUL Listed & Recognized Class 2 24VDC power supplies. Please check the input voltage and use the power supply that matches the indicated voltage.
- The total power of the lighting fixture must be lower than the output power of the power supply and dimming controls.
- For remote DC power, use only Class 2 power supplies rated 24VDC unless specified otherwise.
- For integrated AC power, use only Class 2 power supplies rated 120-277VAC or less, unless specified otherwise.
- To maintain Class 2 power compliance, do not exceed more than a 96W load circuit.
- 1 power supply can power 1 wire exit.
- Using a power adapter is essential for remote power. AC power may only be used when power is shipped in a fully integrated, pre-assembled setup. Using remote power with AC will instantly burn the LEDs, permanently damage the product and void the warranty.

MANAGING VOLTAGE DROP

- Keep wires between LUXCANVAS and power supplies as short as possible to prevent voltage drop.
- We recommend heavier wire gauges for longer distances. Please reach out to our team for recommended AWG.

WIRING COLOR CODES

CCT	Standard Wire Gauge (AWG)	Power Type	Wire Color	Charge
Static White CCTs	20	DC (Remote)	Red	+
			Black	-
	18	AC (Integrated)	Black	+
			White	-

DIMMING INSTRUCTIONS

- 1) Connect power supply and LUXCANVAS to the dimmer per dimmer instructions.
- 2) Adjust the light to the desired brightness level with the dimmer.
- 3) Use LEDCONN recommended dimmers for optimal performance. Using any other dimmers can affect luminaire performance & void warranty. Consult with LEDCONN engineers for compatibility.

COMPATIBLE DIMMER

Example of static white dimmer



MAGNETIC (MLV)/ 0-10V



RED/WHITE

VIOLET (+)

GRAY (-)

BLUE

LOAD

O-10V Driver

O-10V Dimmer

SINGLE POLE (GENERAL) 0-10V

LINE/HOT BLACK

RED SWITCHED HOT

NEUTRAL WHITE

VIOLET (+)

GRAY (-)

0-10V Driver

O-10V Dimmer

LOAD

LUXCANVAS™ Static White

RECESSED Indoor/Dry Location Series



STORAGE & MAINTENANCE

- Always wear clean gloves when handling LEDCONN LUXCANVAS. indoors and do not get the product wet.
- Handle the fabric around the silicone beading and avoid directly touching the fabric face to prevent transfer of dirt or fingerprints.
- Maintain original packaging material until time of installation.
- Avoid exposure to water to any part of LUXCANVAS.
- Store LUXCANVAS in a dry and clean area.
- Ensure there is sufficient manpower available to support the large and heavy final mounting of LUXCANVAS.
- Avoid touching the fabric face.
- Maintain clean workspace that is free of dust and debris.

IMPORTANT SAFETY INSTRUCTIONS

Installation of this assembly requires a person familiar with the construction and operation of the luminaire's electrical system and the hazards involved. If not qualified, do not attempt installation. Contact a qualified electrician if you are unfamiliar with methods for installing electrical wiring, secure the services of a qualified electrician.

LEDCONN LED fixtures are designed to meet the latest NEC requirements and are listed in full compliance with the relevant UL standard(s). Before attempting installation of any LED fixture, check your local electrical building code. All electrical connections must be in accordance with local codes, ordinances and the National Electric Code. Always confirm that the maximum wattage of your luminaire does not exceed the maximum wattage of the connected electrical circuit.

- **IMPORTANT** Risk of fire or electric shock. Installation of this luminaire assembly requires a person familiar with the construction and operation of the luminaire's electrical system and the hazard involved. If not qualified, do not attempt installation. Contact a qualified electrician
- **IMPORTANT** Do not connect LED light engine to AC power!
- **IMPORTANT** Risk of fire or electric shock. Install this assembly only if the luminaires have the construction, features, and dimensions shown in the photographs and/or drawings.
- **IMPORTANT** To prevent wiring damage or abrasion, do not pinch or damage exposed wiring during installation. Keep away from edges of sheet metal or other sharp objects
- Verify power is off before installing or un-installing.
- Do not use product if any LED components are damaged.
- The product has no user serviceable parts. Do not attempt to open the product or repair it on site. If damaged, please notify LEDCONN immediately for servicing.
- Do not exceed the specified voltage and current input (refer to the specification sheet for power limitations).
- Do not hot plug the light engine to an energized power supply. Hot plugging may cause permanent damage to the LEDs.
- Avoid looking directly into the luminaire as the high brightness beam may damage eyes.
- LEDCONN's limited warranty applies only to LEDCONN's LUXCANVAS LED textile luminaire.
- This product must be installed in accordance with the applicable installation code by a person familiar with the construction and operation of the product and the hazards involved.
- Do not make or alter any open holes in an enclosure of wiring or electrical components during installation.
- Please retain these instructions for maintenance reference.
- Test before installing; LEDCONN products undergo rigorous reliability testing before shipment, but due to unforeseen shipping and handling issues inspect the assembly accordingly.

WARRANTY



**LIMITED
MANUFACTURER
WARRANTY**

These handling and mounting materials and any other communications related to the installation of LUXCANVAS LED Textile are offered for informational purposes only. Handling and mounting is the installer's responsibility. Under no circumstances is LEDCONN assuming any liability, express or implied, regarding the installation or application of any of its LUXCANVAS LED Textile, whether proper or improper. Further, LEDCONN assumes no liability for any costs associated with the installation or re-installation of LUXCANVAS LED Textile.

The standard warranty for this product is 5 years. Any damage caused by mishandling or improper installation of the product as outlined in this installation guide will void the warranty. Examples of mishandling or improper use include but are not limited to: not cutting along product cut lines; using power supplies or controls not recommended by LEDCONN; and using product in damp environments without proper damp location treatment. Please consult a LEDCONN team member for more information about the warranty coverage.