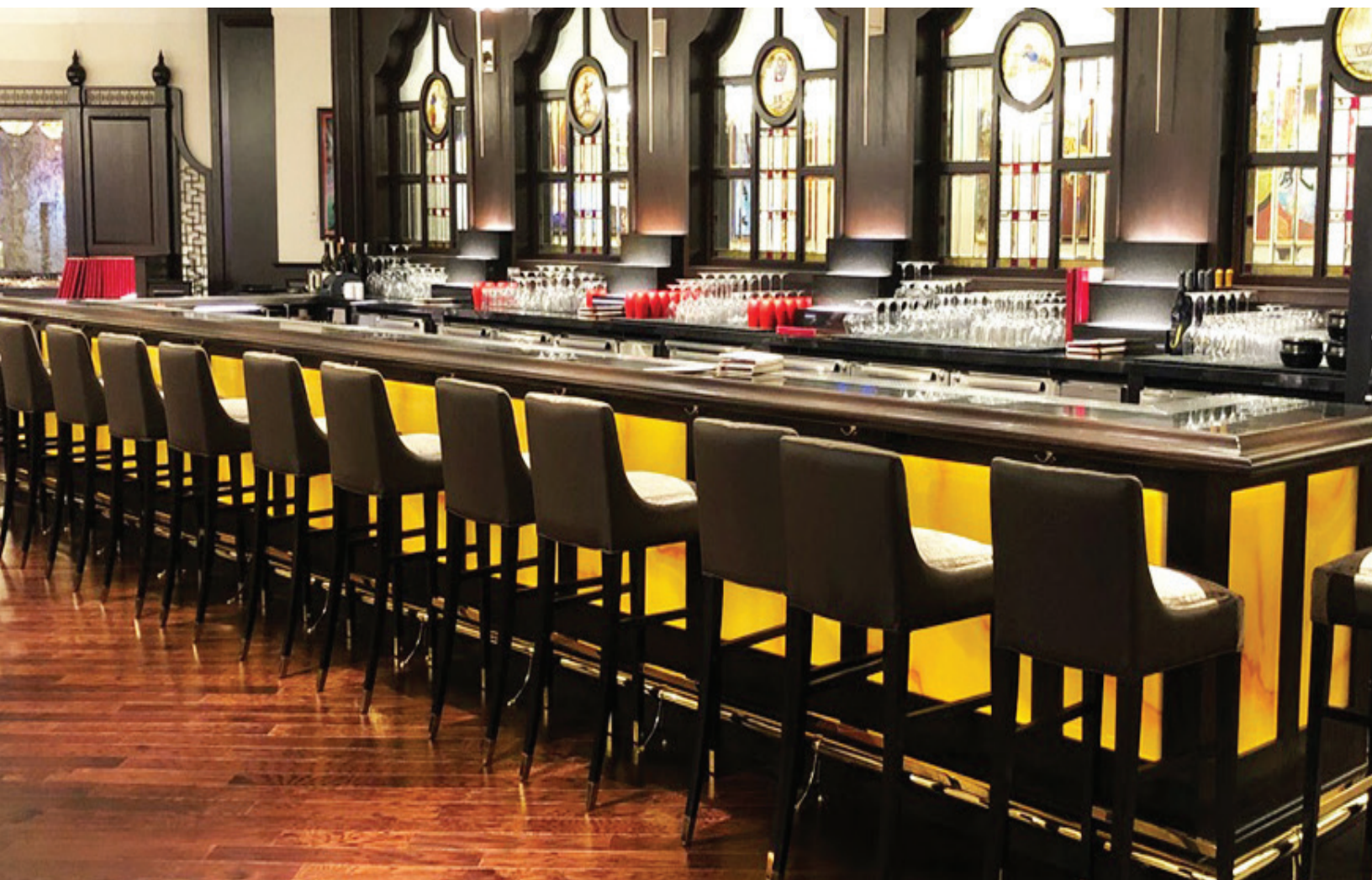


## CASE STUDY

# LUXURY LED ILLUMINATED FAUX ALABASTER BAR



**LUXFIT™**  
LED LIGHT PANEL

## LED ILLUMINATED FAUX ALABASTER BAR UPSCALE ASIAN RESTAURANT



# OVERVIEW

## LED ILLUMINATED FAUX ALABASTER BAR

UPSCALE ASIAN RESTAURANT

**lighting design** KGM Architectural Lighting

**product** LUXFIT™ LED Light Panel

**manufacturer** LEDCONN

Using lighting to elevate the restaurant experience is a very common practice in the hospitality and restaurant design world. Lighting helps to establish the mood and ambience of the restaurant and creates an atmosphere where customers want to visit and enjoy. For high end restaurants, a bar serves a greater purpose than simply providing alcoholic beverages; they often serve as a design focal point for the entire restaurant.

For this specific fine dining Asian restaurant, the designer wanted to add illumination to the bar to emphasize the restaurant's luxury brand image. A total of 16 LUXFIT LED light panels were utilized to illuminate the yellow faux alabaster stone slabs installed around the perimeter of the bar.



## SURFACE MATERIAL

The designer picked a yellow faux stone alabaster specifically to create a luxurious image that reflected the restaurant's brand colors and aesthetic. Reds, yellows, whites, gold, and dark woods made up the basic color palette of this upscale Asian restaurant. Yellow faux alabaster meshed well with the overarching color palette. As a translucent stone, the addition of LED illumination would bring out the brilliance in the coloration and natural veining seen in the stone. And out of all the available backlighting products for illuminating the faux alabaster stone, LUXFIT's sleek, even illumination would prove to be the best fit for this particular project.

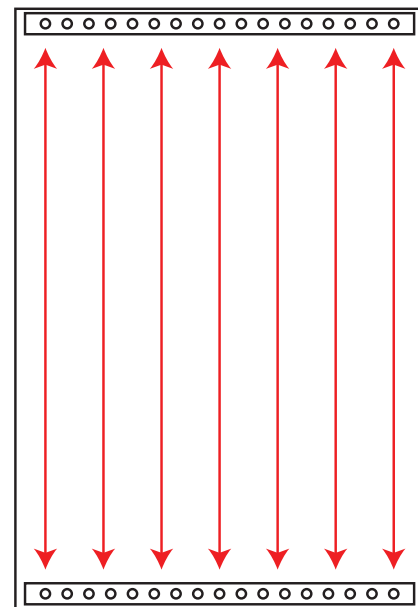


## KEY CHALLENGE

With translucent stone illumination, one of the common problems is figuring out how to illuminate the material without hotspots. Fortunately for a product like LUXFIT, the LEDs populate only the outside edges of the light panel, lending to an even backlit appearance.

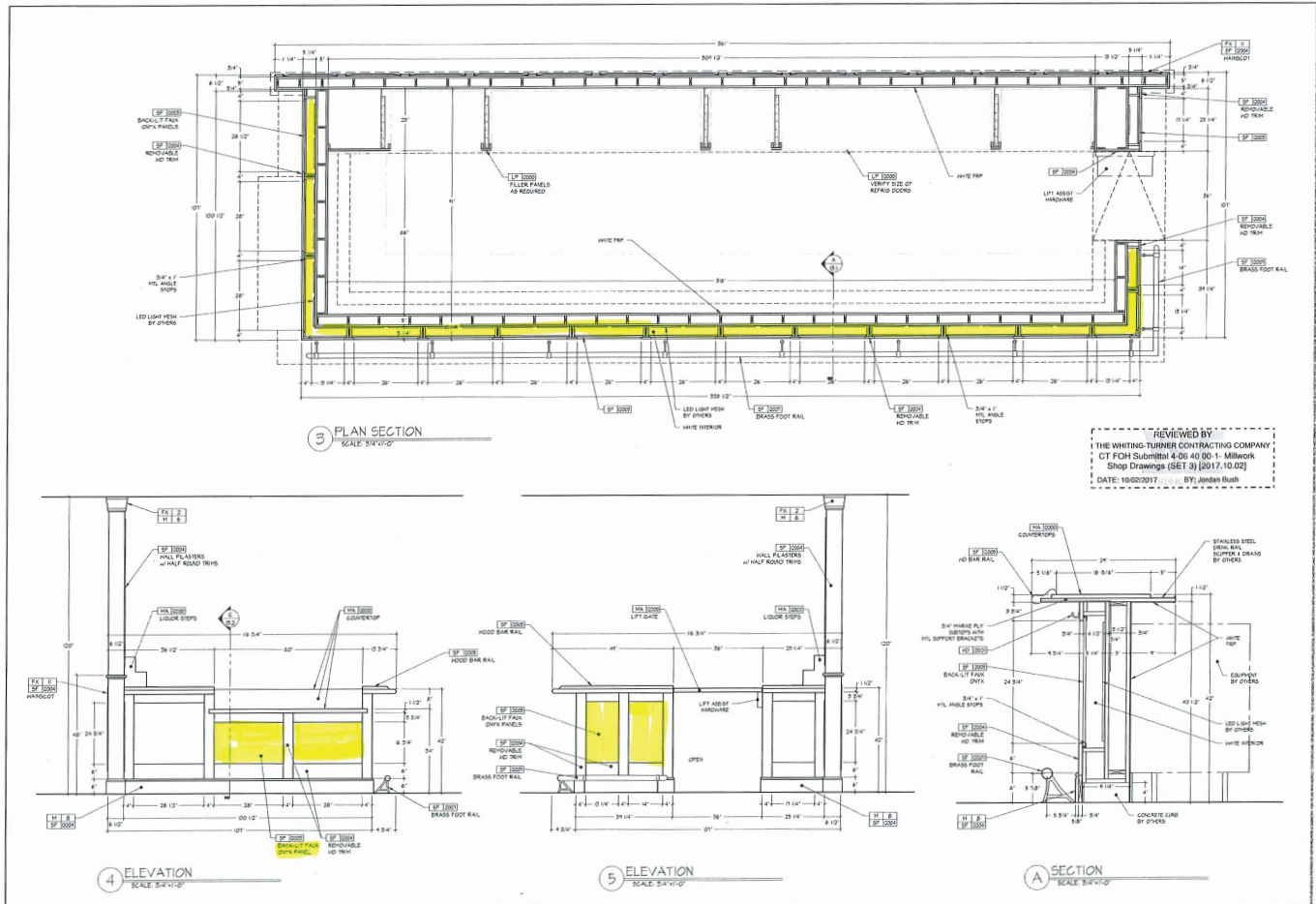
Also due to the smaller custom sizes of the selected surface material, the LUXFIT LED light panels were perfectly cut to size. Although the stones varied in width, the heights were all equal. With this in mind, the LEDCONN engineering team made sure to populate the top and bottom edges on the light panel with LEDs so that the brightness would be equal across all the panels.

Evenness and brightness quality were controlled largely by two factors: the uniformity of the light panel heights and the even light distribution through LEDCONN's Dot-Pattern Technology. The light panels all share the same height, which helps promote evenness and uniform brightness across all of them even with different panel widths. The equidistant placement of LEDs on the top and bottom of the panels played a key role in ensuring the overall brightness remains the same. Additionally, LEDCONN's Dot-Pattern Technology helped to provide even light distribution. A custom dot pattern was etched on each panel surface to help light travel evenly across the panel. The combination of these two factors ensured the highest illumination quality behind each illuminated stone.



LEDs are placed at the top and bottom across light panels sharing the same height, which helps with uniform brightness.

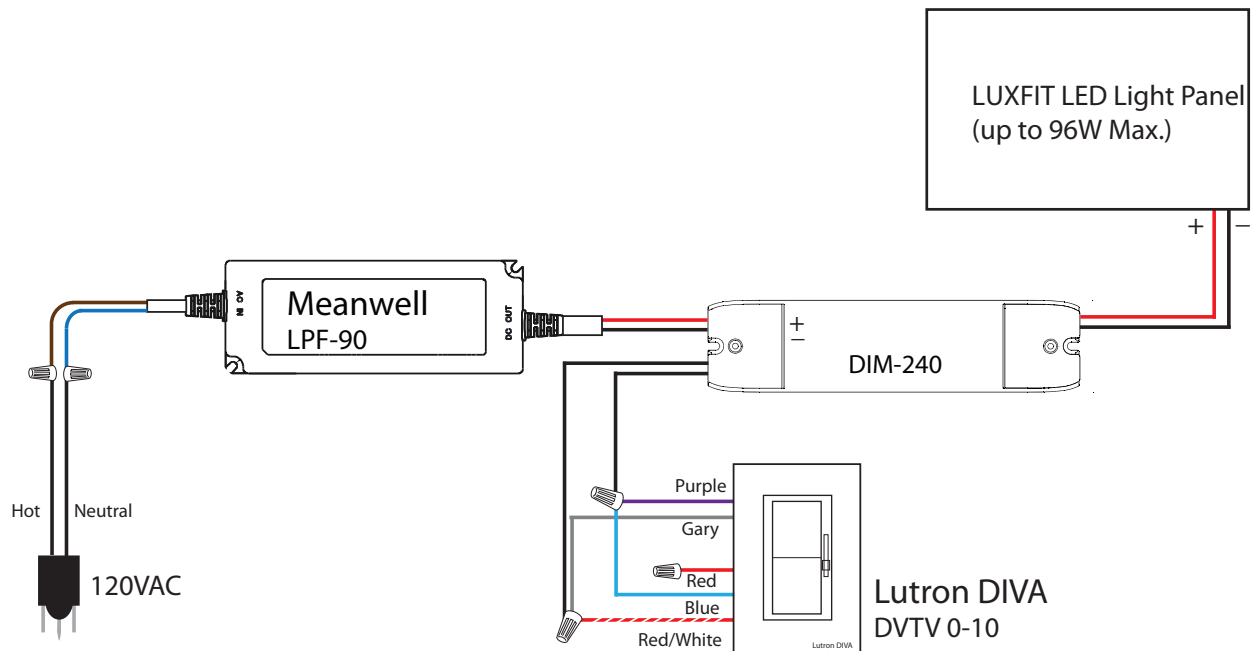
This drawing below shows where panels and faux alabaster stones were planned on the bar design. The yellow areas indicate spots where the panels and stone were installed. An airgap of about 5.25" was planned between the stone and the panel.



# WIRING & POWER

Due to the relatively low wattage of each of the panels, the LEDCONN engineering team simply advised the installer to not exceed 96W on a single driver. The exact wattages of each requested panel size had been indicated on the final bill of materials so that the installer would be able to calculate and connect panels to drivers and dimmers on their own. The LEDCONN engineering team simply provided a wiring diagram of the power supply connections so the installer would better understand how to connect the panels to the requested drivers and dimmers.

## Electronic Power Supply with Dimming Module Solution



# LIGHTING FIXTURES



## LUXFIT CUSTOM LED LIGHT PANELS

- Customizable product allows for lighting fixture size to match glass surface dimensions.
- Large panel sizes up to 5ft x 10ft
- Requires minimal airgap and still looks hotpot free/seamless
- Arrives pre-cut to spec dimensions. May be provided with predrilled holes for easy installation depending on application need.



## THE FINAL RESULT

- Designed with energy-efficiency in mind
- Product fit matched design intent perfectly
- Successful backlighting of faux alabaster bar



Through the combined efforts of the Designer, GC, and manufacturer, this beautiful hotel suite was expediently completed in less than a month without a snag.

**Thank you to everyone who helped make this project a success!**

**Do you need a lighting solution for your project? Our team is ready to help.**

**Reach out to us for a complimentary lighting consultation today!**