

LUXLINEAR™

FLAT 1408M Magnet Series

MIX & MATCH

For most custom applications requiring a slim, rigid lighting solution, we offer our **LUXLINEAR™ 1408M LED light tubes**. The Magnet series can adhere to metal surfaces directly and easily without extra parts. We custom cut and assemble each tube light unique to your application needs. Each tube is conveniently designed to be compatible with various LUXLINEAR™ LED Light Strips. Featuring superior craftsmanship, you will be satisfied when you choose LUXLINEAR™ for your next project.

ASSURED QUALITY



E477011



100% QC

LIMITED
WARRANTY

MECHANICAL

CONSTRUCTION & BASE MATERIAL

Extrusion Material Anodized aluminum

Extrusion Max. Run 6.5 ft. (2m) per individual extrusion. There is no limit to the length of your channel extrusion. For applications requiring extrusions longer than 6.5 ft., we recommend mounting individual extrusions side by side to achieve the desired length. Extending extrusions in this way has no effect on lighting performance.

Magnetized Mounting Magnet

End Cap Material Polypropylene

Diffuser Lens Material Polypropylene

COMPLIANCE & REGULATORY APPROVAL

UL E477011 • RoHs • CE • Warranty 5 years

TUBE OPTIONS

Diffuser Lens Frosted • Clear • No lens

FINISHES

Aluminum Finish Clear anodized aluminum

Available Powdercoat Finish Gloss • Matte • Textured

Available Colors



Moon Gray

Custom Color
Powdercoat

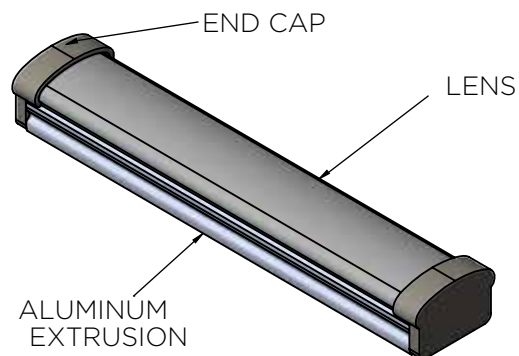
KEY FEATURES

POWERED
BY LUXLINE™
LED STRIP

SLIM WIDTH

CUSTOM
LENGTHSSHIPS FULLY
ASSEMBLEDPROTECTS
AGAINST DUST
& DEBRISFLAT &
COMPACTMAGNETIC FOR
EASY INSTALL

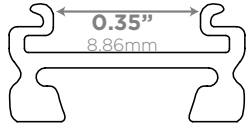
ASSEMBLED PROFILE



PROJECT NAME/NO.	PART NUMBER
SPECIFIED BY	NOTE

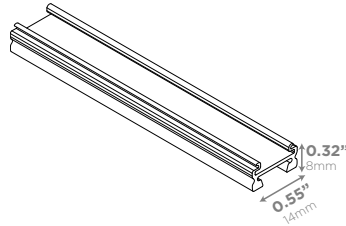
LUXLINEAR™

FLAT 1408M Magnet Series



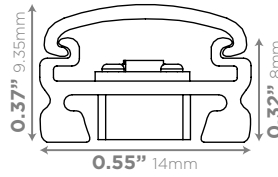
CHANNEL SECTION

1



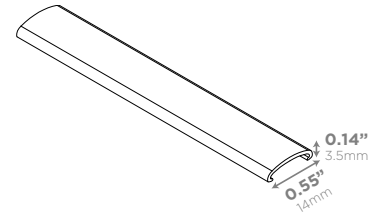
ALUMINUM EXTRUSION

2



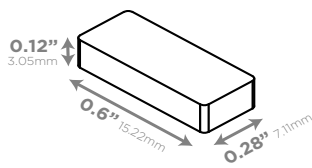
CHANNEL CROSS-SECTION

3



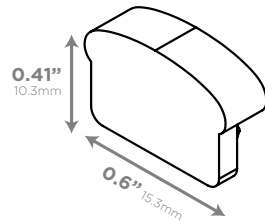
DIFFUSER LENS

4



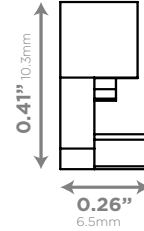
MAGNET

5



END CAP

6



PRODUCT DIMENSIONS

#	COMPONENT	DIMENSIONS	MATERIAL	COLOR	DESCRIPTION
1	Channel Width	0.35" 8.86mm			Refers to the interior space within the extrusion. LUXLINEAR™ LED strips must be no larger than the channel width to fit inside LUXLINEAR™ tubes.
2	Aluminum Extrusion	0.55" X 0.32" 14mm X 8mm	Anodized aluminum	Moon Gray	Encases LUXLINEAR™ LED strips in a sleek container which keeps dust, debris, water and moisture away from the strip. Also acts as a heat sink to prolong the lifespan of the LUXLINEAR™ LED strip tape contained within.
3	Channel Cross-Section & Magnet	0.55" X 0.37" 14mm X 9.35mm			Provides the the absolute maximum width of the installed aluminum extrusion with magnet built-in.
4	Diffuser Lens	0.55" X 0.14" 14mm X 3.5mm	Polypropylene	Frosted	Helps protect LUXLINEAR™ LED strip lights contained within LUXLINEAR™ tubes against dust, debris & moisture. Softens the light beam intensity. Diffuser may marginally shift Kelvin temperature and decrease lumen output.
				Clear	Helps protect LUXLINEAR™ LED strip lights contained within LUXLINEAR™ tubes against dust, debris & moisture without affecting color temperature or lumen output.
5	Magnet	0.6" X 0.28" X 0.12" 15.22mm X 7.11mm X 3.05mm	Magnet	Dark Gray	Magnets are embedded inside the bottom of the extrusion. This allows the profile to adhere to metal surfaces directly and easily without extra parts.
6	End Caps	0.6" X 0.41" X 0.26" 15.3mm X 10.3mm X 6.5mm	Polypropylene	Crater Gray	End caps are provided in pairs and come with one closed end and one open cap that allows for wires up to 18 AWG to pass through.

PROJECT NAME/NO.	PART NUMBER
SPECIFIED BY	NOTE

LUXLINEAR™

FLAT 1408M

Magnet Series

ELECTRICAL

MAX. LOAD & MAX LED STRIP WIDTH

Max. Load Depends on the type of LUXLINE™ or equivalent LED strip used to power the LUXLINEAR™ LED Tube extrusion. Please reach out to a Sales Team Member for more information about Max Load & Power Capacity for our various LUXLINE™ LED Strips.

Max. LED Strip Width This profile will only accommodate strips up to and less than 0.35" (8.86mm) wide.

COMPATIBLE LUXLINE™ LED STRIPS

- LUXLINE 2835L, 2835H¹ 0.16" (4mm)
- LUXLINE 2016, 3528H 0.20" (5mm)
- LUXLINE 3528 (RGB) 0.24" (6mm)
- LUXLINE 2835R, 2835RO, 3528 (Tunable White) 0.31" (8mm)

¹ LUXLINE 2835L & 2835H are only available upon request.

SAFETY DISCLOSURES

Electric Code Compliance Please make sure to install LUXLINEAR™ in accordance with standard national and local electrical codes.

Outdoor Usage LUXLINEAR™ is meant to be used for indoor dry location applications only.

Manufacturer Recommended Parts for Best Performance

LUXLINEAR's lighting performance is at its best when purchased and utilized with LUXLINE™ LED strips. For easiest installation, please mount LUXLINEAR™ with the provided magnets.

Actual Product Color May Vary Please note that the product color as seen in this specification sheet, photography, and related marketing material for this product may vary slightly from your actual customized product due to photographic and design limitations.

Specifications are Subject to Change Without Notice While we try to make every effort to inform customers of updates to our products, we reserve the right to make modifications and improvements to our fixture specifications and designs without advance notice.

Manufacturer is Not Liable for Matching Fixtures to Pre-Existing Fixture Installations We cannot guarantee matching the CCT appearance, product design, or lumen output for pre-installed fixtures or reorders.

LUMEN DATA FOR COMPATIBLE LUXLINE™ STRIPS

COMPATIBLE LUXLINE STRIP		FROSTED LENS		CLEAR LENS		NO LENS	
SIZE	WIDTH	BEAM ANGLE	LUMEN OUTPUT	BEAM ANGLE	LUMEN OUTPUT	BEAM ANGLE	LUMEN OUTPUT
LUXLINE 2835L*	0.16" 4mm	140°	140 lm	140°	219 lm	125°	259 lm
LUXLINE 2835H*	0.16" 4mm	140°	196 lm	140°	307 lm	125°	362 lm
LUXLINE 2016	0.20" 5mm	140°	140 lm	140°	219 lm	125°	259 lm
LUXLINE 3528H	0.20" 5mm	140°	112 lm	140°	175 lm	125°	207 lm
LUXLINE 3528 - RGB	0.24" 6mm	140°	84 lm	140°	132 lm	125°	155 lm
LUXLINE 2835R	0.31" 8mm	140°	140 lm	140°	219 lm	125°	259 lm
LUXLINE 2835RO	0.31" 8mm	140°	99 lm	140°	154 lm	125°	182 lm
LUXLINE 3528 - Tunable White	0.31" 8mm	140°	140 lm	140°	219 lm	125°	259 lm

* Available upon request.

PROJECT NAME/NO.	PART NUMBER
SPECIFIED BY	NOTE

LUXLINEAR™

FLAT 1408M

Magnet Series

APPLICATIONS

ILLUMINATION TYPE

Under Cabinet Lighting	Yes
Retail & POP Display	Yes
Showcase Lighting	Yes
Display Lighting	Yes

ADJUSTABILITY & COMPATIBILITY

Adjustable after mounting	Yes
Smart Track System compatible	No
Direct end-to-end connectable	No
IC Chip compatible	No

MOUNTING

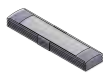
Surface	Yes
Recessed	Yes
Outdoor	No
Flange	No



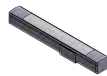
AVAILABLE PROFILES*



NORMAL
1715



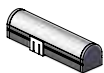
LOW
1707



SLIM
1008



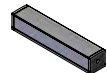
CORNER
1919



ROUND
2019



FLAT
1408M



SQUARE
1513M

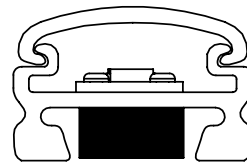
*Special profiles available upon request.
Contact a Project Specialist for more information.

INSTALLATION

Field Cuttable If LUXLINE is not pre-installed, LUXLINEAR™ is fully field cuttable and may be cut at any point along the extrusion to match the length of your preferred LUXLINE™ or equivalent LED strip.

Hotspots Possible dark spotting on edges may appear due to final fixture dimension and LED cutting length and voltage.

Environment Indoor/dry location only. For best performance, avoid mounting assembled extrusions in direct sunlight. Avoid mounting LUXLINEAR™ near direct water contact or surfaces subject to puddling caused by rainfall or sprinkler sprays. Our craftsmen make every effort to customize and assemble your extrusion to perfection. Even so, dust, debris, water, or moisture may still enter the extrusion through the adjoining pieces over time.



MAGNET

PROJECT NAME/NO.	PART NUMBER
SPECIFIED BY	NOTE

LUXLINEAR™

FLAT 1408M

Magnet Series

LUXLINEAR™ LIGHT TUBE PART NUMBER

EXAMPLE

FT36WAB-2835R-M

FLAT 1408M

36"

6500K

DIFFUSED

DC BARREL

2835R/120/8

MAGNETIC

FT

36

W

A

B

-2835R

-M

PRODUCT
LINE/PROFILE

LENGTH

COLOR
TEMPERATURE
(CCT)

LENS

CONNECTOR

LED STRIP TYPE

ARRANGEMENT

BUILD IT!

FOR MOUNTING
OR END CAPS ONLY

PRODUCT LINE/PROFILE TYPE

FT LUXLINEAR/FLAT 1408M

LENGTH (IN INCHES)

LL LENGTH VARIES

COLOR TEMPERATURE (CCT)

W 6500K
 V 5300K
 Y 4100K
 Z 3000K
 T TRICOLOR (RGB)
 A ADJUSTABLE (TUNABLE WHITE)
 R RED
 G GREEN
 B BLUE
 C CUSTOM CCT
 N NON-LIT (TUBE ONLY)

LENS

A FROSTED (DIFFUSED)
 N CLEAR LENS (NON-DIFFUSED)
 E NO LENS

CONNECTOR

B DC BARREL JACK
 H HARDWIRE
 M MOLEX®
 C SPECIAL
 N NO CONNECTOR & NO WIRING

LED

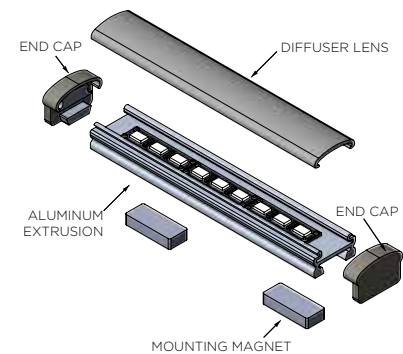
OMIT if RGB or tunable white

-2835L 2835L/120/4 (4mm)
 -2835H 2835H/180/4 (4mm)
 -2016 2016/182/5 (5mm)
 -3528H 3528H/90/5 (5mm)
 -2835R 2835R/120/8 (8mm)
 -2835RO 2835RO/84/8 (8mm)

ARRANGEMENT

Select all that apply and write in relative order

-M MAGNETIC MOUNTING
 -N NO END CAPS (OPTIONAL)



PROJECT NAME/NO.	PART NUMBER
SPECIFIED BY	NOTE