



LOOK BOOK

2019 RETAIL PRODUCTS GALLERY



LIGHTING



Besa Lighting

besalighting.com

There's a meeting of materials in the **Benji Pendant** - a wooden sphere contained within a glass globe with a blown inverted lip. This suspended fixture is right at home in naturally inspired spaces.



Soraa

soraa.com

Illuminate merchandise with the **Arc** collection. Specifically designed for product display, these fixtures feature a broad visible spectrum, promising clean shadows and infinite shades of white.



Ledconn

ledconn.com

Luxline LED strips are a customizable lighting solution that encompasses a CRI of 90-plus for 3000-6500K correlated color temperatures. Ideal for tight, compact spaces, you can use these for curved applications or even signage.



Jesco Lighting Group

jescolighting.com

Perfect for along-the-wall applications, **S601P/S602P LED Slim Stix** grab attention for product display. They have a slender design for hard-to-reach areas, with two color temperatures and a linkable system.



Tresco Lighting

trescolighting.com

Draw attention to shelving and storytelling branding with **Etch Panel Lighting**. With uniform intensity and a choice of shades, it's designed specifically for commercial settings.



Drytac
drytac.com

From the window to the floor, SpotOn graphics can be installed anywhere without the need for tools. They feature a dot pattern for bubble-free application and easy removal.



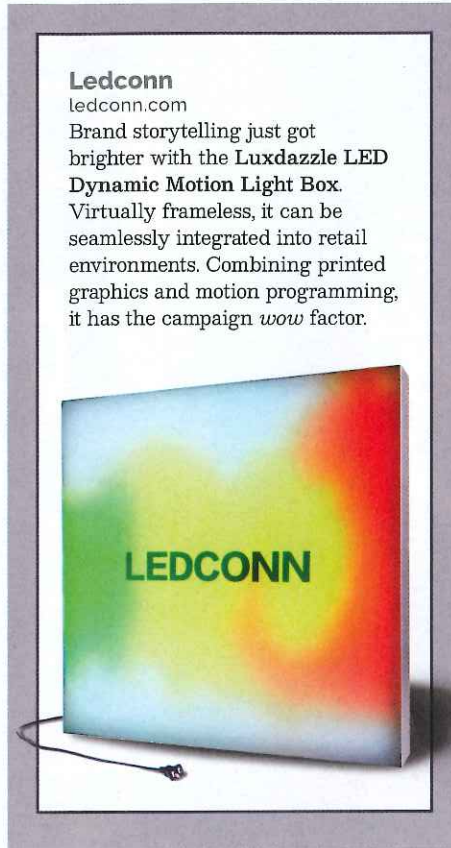
Daktronics
daktronics.com

Elevate the in-store experience with these LED Video Walls, with wraparound customization. Moving imagery, backed here by LED tech and a narrow pixel pitch, is a useful engagement tool.



Kendu In-Store Visual Solutions
kendu.com

The Flowbox delivers impressive depth, which works well in tight spaces. It combines SEG with motion effects to display animated sequences for an unforgettable in-store experience.



Ledconn

ledconn.com

Brand storytelling just got brighter with the Luxdazzle LED Dynamic Motion Light Box. Virtually frameless, it can be seamlessly integrated into retail environments. Combining printed graphics and motion programming, it has the campaign *wow* factor.



Central Station

centralstationto.com

Uniquely imagined for the world-famous chocolate company, Lindt, this custom, sleek graphic suite showcases product, as well as the retailer's partnership with the NHL, through clean lines and primary colors.



The Vomela Companies

vomela.com

Give branding a bold new look with Magnetic Signage. This 3-D hardware is easy to update, with convenient magnetic backing. With bright colorways and customizable fonts, it makes a statement placed over p-o-s. ▴