

shop!
retail
environments

SHOPASSOCIATION.ORG | MARCH/APRIL 2019

SHIFTING GEARS

Changing the way cars
are sold and serviced



GlobalShop preview

Focus: lighting

Interactive POP

FOCUS: lighting

BY JACKIE KALIS

BEYOND PROVIDING SHOPPERS WITH GREATER VISIBILITY, well-executed retail lighting proves a powerful element in building ambience, highlighting products, and increasing the impact of signage and branding elements, just to name a few of its many functions.

Shop! members' lighting innovations currently on the market include:

- Elemental LED's NEON BLAZE, accent lighting imbued with technology that prevents hot spots or dark areas.
- Environmental Lights' Mini Bluetooth Mesh Controllers, wireless controllers that enable lighting adjustments via a mobile app.
- LEDCONN's LUXFIT, an LED edge-lit panel that can be cut into any geometric shape.
- Moss' PIXLIP GO, a lightweight lightbox that can be assembled without tools in less than 15 minutes.

For details on these and other Shop! member products, read on. And for more information on Shop! members' lighting products, go to supplierconnect.shopassociation.org.

Emium Lighting

emium.com

The GL High Bay from Emium Lighting provides beautiful illumination in a robust, affordable package. It is easy to install and rated at 100,000 hours (L70) for many years of maintenance-free use. Housing is constructed of AL1070, 99.7% pure aluminum for superior heat dissipation. A 100W high bay can be used to replace a 400W HID high bay, using less than 30% of the energy. UL and DLC listed; qualifies for utility energy saving incentives. Acrylic reflector is optional.

Elemental LED Inc.

diodeled.com

Bring the ultimate accent lighting into your project with NEON BLAZE. With Zero Line Diffusion technology, color is saturated from end to end with absolutely no hot spots or dark areas. Choose from multiple outputs in lengths up to 65 ft. in the most popular colors. Field cuttable options, easy to install, and IP65. White light options: 2700K, 3500K, 6300K. Solid color options: green, blue, purple, pink, red, and gold. RGB color-changing option now available.

LEDCONN

ledconn.com

Slim in profile ($\frac{1}{4}$ in. to $\frac{3}{8}$ in. thick) and providing bright, even illumination, LUXFIT is a versatile LED edge-lit panel featuring laser-etched dot light guide pattern technology. Designed for highly customized lighting applications, LUXFIT may be cut into any geometrical shape. LUXFIT is offered with static CCT offerings from 3000K to 6500K and also in RGB, RGBW, and Tunable White. Ideal applications include: accent lighting, hospitality lighting, backlighting, and signage.

Hera Lighting

heralighting.com

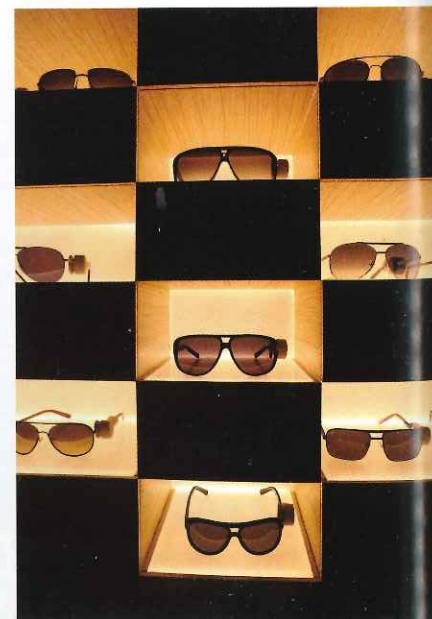
The new CStick-LED is the next generation of LED customization. The design, light output, and length are all fully customizable. Optimal for projects with unique design and budget requirements. CStick-LED is designed to be flexible, affordable, and to raise the bar in quality. This linear LED caters to your specs without compromising quality or price.



EMIUM LIGHTING



ELEMENTAL LED INC.



LEDCONN