

LUXLINEAR™

CORNER 1919

Indoor/Dry Location Series

MIX & MATCH

Sometimes a straight beam of light is simply not enough. That's why we've developed **LUXLINEAR™ Corner Profile 1919 LED light tubes**, which provide more focused lighting that emits light at an angle of 45°. This profile is designed to fit into corners to provide backlighting for corner installations. Corner profiles can also be used to better illuminate products sitting on a shelf display. Utilize any of our LUXLINEAR™ LED Light Strips for maximum illumination.



ASSURED QUALITY



E477011



100% QC



LIMITED
WARRANTY

KEY FEATURES



POWERED
BY LUXLINEAR™
LED STRIP



SLIM WIDTH



CUSTOM
LENGTHS



PROTECTS
AGAINST DUST
& DEBRIS



COMES WITH
2 MOUNTING
CLIPS



SHIPS FULLY
ASSEMBLED

MECHANICAL

CONSTRUCTION & BASE MATERIAL

Extrusion Material Anodized aluminum

Extrusion Max. Run 6.5 ft. (2m) per individual extrusion. There is no limit to the length of your channel extrusion. For applications requiring extrusions longer than 6.5 ft., we recommend mounting individual extrusions side by side to achieve the desired length. Extending extrusions in this way has no effect on lighting performance.

Mounting Clip Material Steel

End Cap Material Polypropylene

Diffuser Lens Material Polypropylene

COMPLIANCE & REGULATORY APPROVAL

UL E477011 • RoHS • CE • Warranty 5 years

TUBE OPTIONS

Diffuser Lens Frosted • Clear • No lens

FINISHES

Aluminum Finish Clear anodized aluminum

Available Powdercoat Finish Gloss • Matte • Textured • Metallic

Available Colors

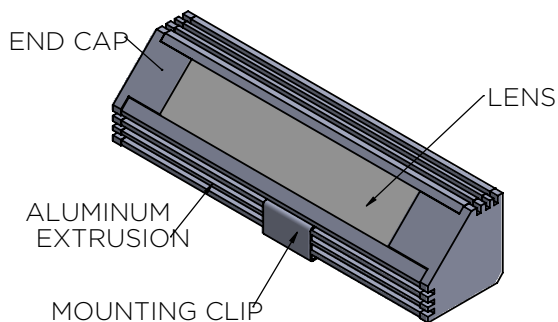


Moon Gray



Custom Color
Powdercoat

ASSEMBLED PROFILE

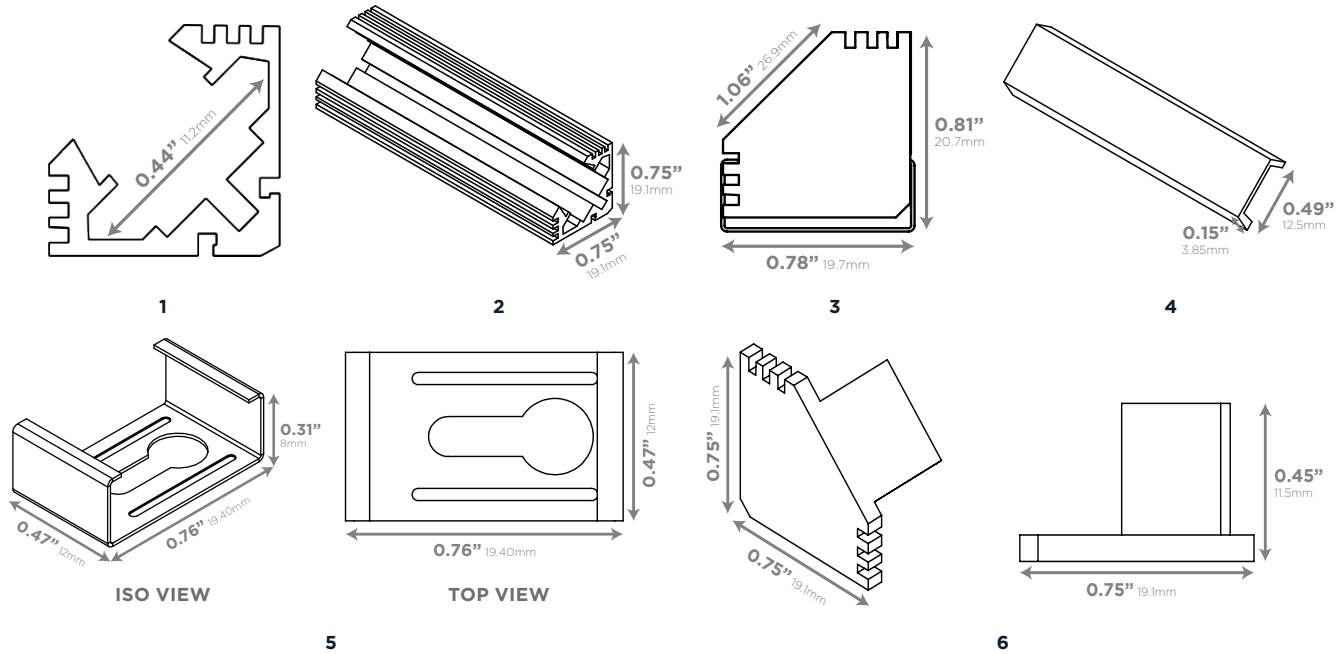


PROJECT NAME/NO.	PART NUMBER
SPECIFIED BY	NOTE

LUXLINEAR™

CORNER 1919

Indoor/Dry Location Series



PRODUCT DIMENSIONS

#	COMPONENT	DIMENSIONS	MATERIAL	COLOR	DESCRIPTION
1	Channel Width	0.44" 11.2mm			Refers to the interior space within the extrusion. LUXLINEAR™ LED strips must be no larger than the channel width to fit inside LUXLINEAR™ tubes.
2	Aluminum Extrusion	0.75" X 0.75" 19.1mm X 19.1mm	Anodized aluminum	Moon Gray	Encases LUXLINEAR™ LED strips in a sleek container which keeps dust, debris, water and moisture away from the strip. Also acts as a heat sink to prolong the lifespan of the LUXLINEAR™ LED strip tape contained within.
3	Channel Cross-Section & Mounting Clips	0.78" X 0.81" 19.7mm X 20.7mm			Provides the the absolute maximum width of the installed aluminum extrusion snapped into the mounting clip.
4	Diffuser Lens	0.49" X 0.15" 12.5mm X 3.85mm	Polypropylene	Frosted	Helps protect LUXLINEAR™ LED strip lights contained within LUXLINEAR™ tubes against dust, debris & moisture. Softens the light beam intensity. Diffuser may marginally shift Kelvin temperature and decrease lumen output.
				Clear	Helps protect LUXLINEAR™ LED strip lights contained within LUXLINEAR™ tubes against dust, debris & moisture without affecting color temperature or lumen output.
5	Mounting Clips	0.76" X 0.47" X 0.31" 19.4mm X 12mm X 8mm	Steel	Moon Gray	To install, clips may be screwed into a surface with a flat screw. LUXLINEAR may be inserted into the installed clip for mounting. 2 clips are provided for every tube \leq 48" length. For every additional 48", 2 extra clips will be provided. Please ask a Sales Rep if more clips are needed.
6	End Caps	0.75" X 0.75" X 0.45" 19.1mm X 19.1mm X 11.5mm	Polypropylene	Crater Gray	End caps are provided in pairs and come with one closed end and one open cap that allows for wires up to 18 AWG to pass through.

PROJECT NAME/NO.	PART NUMBER
SPECIFIED BY	NOTE

LUXLINEAR™

CORNER 1919

Indoor/Dry Location Series

ELECTRICAL

MAX. LOAD & MAX LED STRIP WIDTH

Max. Load Depends on the type of LUXLINE™ or equivalent LED strip is used to power the LUXLINEAR™ LED Tube extrusion. Please reach out to a Sales Team Member for more information about Max Load & Power Capacity for our various LUXLINE™ LED Strips.

Max. LED Strip Width This profile will only accommodate strips up to and less than 0.44" (11.2mm) wide.

COMPATIBLE LUXLINE™ LED STRIPS

- LUXLINE 2835L, 2835H¹ 0.16" (4mm)
- LUXLINE 2016, 3528H 0.20" (5mm)
- LUXLINE 3528 (RGB) 0.24" (6mm)
- LUXLINE 2835R, 2835R0, 3528 (Tunable White) 0.31" (8mm)

¹ LUXLINE 2835L & 2835H are only available upon request.

SAFETY DISCLOSURES

Electric Code Compliance Please make sure to install LUXLINEAR™ in accordance with standard national and local electrical codes.

Outdoor Usage LUXLINEAR™ is meant to be used for indoor dry location applications only.

Damp Location LUXLINEAR™ may be used in damp location environments only if the LUXLINEAR™ or equivalent LED strip assembled with the product has been treated with the appropriate IP rating for damp location use.

Manufacturer Recommended Parts for Best Performance

LUXLINEAR's lighting performance is at its best when purchased and utilized with LUXLINE™ LED strips. For easiest installation, please mount LUXLINEAR™ with the provided mounting clips or 3M adhesive.

Actual Product Color May Vary Please note that the product color as seen in this specification sheet, photography, and related marketing material for this product may vary slightly from your actual customized product due to photographic and design limitations.

Specifications are Subject to Change Without Notice While we try to make every effort to inform customers of updates to our products, we reserve the right to make modifications and improvements to our fixture specifications and designs without advance notice.

Manufacturer is Not Liable for Matching Fixtures to Pre-Existing

Fixture Installations We cannot guarantee matching the CCT appearance, product design, or lumen output for pre-installed fixtures or reorders.

LUMEN DATA FOR COMPATIBLE LUXLINE™ STRIPS

COMPATIBLE LUXLINE STRIP		FROSTED LENS		CLEAR LENS		NO LENS	
SIZE	WIDTH	BEAM ANGLE	LUMEN OUTPUT	BEAM ANGLE	LUMEN OUTPUT	BEAM ANGLE	LUMEN OUTPUT
LUXLINE 2835L*	0.16" 4mm	135°	131 lm	134°	210 lm	120°	250 lm
LUXLINE 2835H*	0.16" 4mm	135°	184 lm	134°	295 lm	120°	350 lm
LUXLINE 2016	0.20" 5mm	135°	131 lm	134°	210 lm	120°	250 lm
LUXLINE 3528H	0.20" 5mm	135°	105 lm	134°	168 lm	120°	200 lm
LUXLINE 3528 - RGB	0.24" 6mm	135°	79 lm	134°	126 lm	120°	150 lm
LUXLINE 2835R	0.31" 8mm	135°	130 lm	134°	210 lm	120°	250 lm
LUXLINE 2835R0	0.31" 8mm	135°	92 lm	134°	148 lm	120°	176 lm
LUXLINE 3528 - Tunable White	0.31" 8mm	135°	130 lm	134°	210 lm	120°	250 lm

*Available upon request.

PROJECT NAME/NO.	PART NUMBER
SPECIFIED BY	NOTE

LUXLINEAR™

CORNER 1919

Indoor/Dry Location Series

APPLICATIONS

ILLUMINATION TYPE

Backlighting	Yes
Under Cabinet Lighting	Yes
Retail & POP Display	Yes
Showcase Lighting	Yes
Display Lighting	Yes

ADJUSTABILITY & COMPATIBILITY

Adjustable after mounting	No
Smart Track System compatible	No
Direct end-to-end connectable	No
IC Chip compatible	No

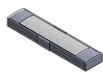
MOUNTING

Surface	Yes
45 degree	Yes
Recessed - for mitered groove	Yes
Outdoor	No
Flangeless	Yes
Flange	Yes

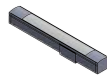
AVAILABLE PROFILES*



NORMAL
1715



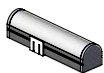
LOW
1707



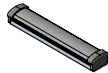
SLIM
1008



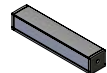
CORNER
1919



ROUND
2019



FLAT
1408M



SQUARE
1513M

*Special profiles available upon request.
Contact a Project Specialist for more information.



INSTALLATION

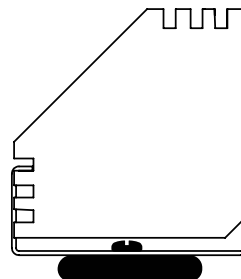
Field Cuttable LUXLINEAR™ is fully field cuttable and may be cut at any point along the extrusion to match the length of your preferred LUXLINE™ or equivalent LED strip.

Hotspots Possible dark spotting on edges may appear due to final fixture dimension and LED cutting length and voltage.

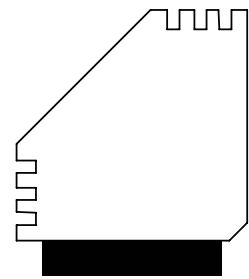
Environment Indoor/dry location only. For best performance, avoid mounting assembled extrusions in direct sunlight. Avoid mounting LUXLINEAR™ near direct water contact or surfaces subject to puddling caused by rainfall or sprinkler sprays. Our craftsmen make every effort to customize and assemble your extrusion to perfection. Even so, dust, debris, water, or moisture may still enter the extrusion through the adjoining pieces over time.

Indoor Damp Location Safe Only with appropriate IP rating and proper damp location treatment to the LUXLINE™ LED strip contained within the assembled extrusion. Ask a Sales Rep for more information about customizing your preferred LUXLINE™ LED strip for custom damp location IP ratings through IP 67.

Mounting Extrusion may be mounted with 3M adhesives or by drilling with provided mounting clips. To mount with mounting clips, drill a flat-top screw through the mounting clip's pre-cut hole. After fastening the mounting clips to your installation surface, snap the assembled extrusion into the installed mounting clip to mount it. LEDCONN highly recommends using the provided mounting clips for best results and easy installation.



W/MOUNTING CLIP



W/O MOUNTING CLIP

MAGNET/TAPE MOUNT

PROJECT NAME/NO.	PART NUMBER
SPECIFIED BY	NOTE

LUXLINEAR™

CORNER 1919

Indoor/Dry Location Series

LUXLINEAR™ LIGHT TUBE PART NUMBER

EXAMPLE

CT84WAB-2835R

CORNER 1919

84"

6500K

DIFFUSED

DC BARREL

2835R/120/8

OPTIONAL

CT

84

W

A

B

-2835R

-M -N

PRODUCT
LINE/PROFILE

LENGTH

COLOR
TEMPERATURE
(CCT)

LENS

CONNECTOR

LED STRIP TYPE

ARRANGEMENT

BUILD IT!

PRODUCT LINE/PROFILE TYPE

CT LUXLINEAR/CORNER 1909

LENGTH (IN INCHES)

LL LENGTH VARIES)

COLOR TEMPERATURE (CCT)

W 6500K

V 5300K

Y 4100K

Z 3000K

T TRICOLOR (RGB)

A ADJUSTABLE (TUNABLE WHITE)

R RED

G GREEN

B BLUE

C CUSTOM CCT

N NON-LIT (TUBE ONLY)

LENS

A FROSTED (DIFFUSED)

N CLEAR LENS (NON-DIFFUSED)

E NO LENS

CONNECTOR

B DC BARREL JACK

H HARDWIRE

M MOLEX®

C SPECIAL

N NO CONNECTOR & NO WIRING

LED

OMIT if RGB or tunable white

-2016 2016/182/5 (5mm)

-2835R 2835R/120/8 (8mm)

-2835RO 2835RO/84/8 (8mm)

-3528H 3528H/90/5 (5mm)

-2835L 2835L/120/4 (4mm)

-2835H 2835H/180/4 (4mm)

ARRANGEMENT

Select all that apply and write in relative order

-M MAGNETIC MOUNTING, MAGNETIC
BACKER ADDED TO THE CHANNEL

-N NO END CAPS

FOR MOUNTING
OR END CAPS ONLY
OMIT IF N/A

MOUNTING CLIP PART NUMBER

EXAMPLE

ZTC-LT/CT

CLIP

ZTC

CORNER 1919

-LT/CT

PRODUCT LINE

PROFILE

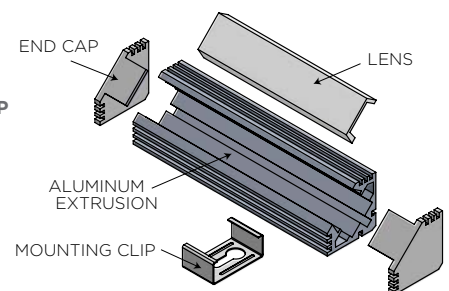
PRODUCT LINE

ZTC LUXLINEAR™ MOUNTING CLIP

PROFILE

LT/CT LOW 1707/CORNER 1919

BUILD IT!



PROJECT NAME/NO.	PART NUMBER
SPECIFIED BY	NOTE