

LUXLINE™

RGB

Indoor Series

VIVID COLOR

For applications requiring dazzling creativity and an electrifying burst of color, we offer our slim 6mm **LUXLINE™ RGB LED Strip**. Like all of our LUXLINE products, cut, flex, and curve this LED strip to fit your specific custom applications with brilliant, colorful illumination. This RGB strip works with multiple controls that can be used to control each strip individually for complex installations.



KEY FEATURES



COMPATIBLE
WITH RGB
CONTROL



OUTSTANDING
BRIGHTNESS



LONG LED
LIFESPAN



WIDE BEAM
ANGLE



FLEX & CURVE



SLIM WIDTH
(6mm)



FIELD
CUTTABLE



80% ENERGY
EFFICIENT



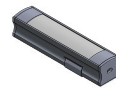
CUSTOM
LENGTHS



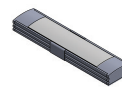
CONSTANT
VOLTAGE

Unleash your creativity with this easy-to-control light strip.

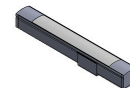
COMPATIBLE LUXLINEAR™ TUBES*



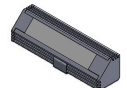
NORMAL
1715



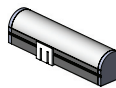
LOW
1707



SLIM
1008



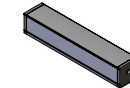
CORNER
1919



ROUND
2019



FLAT
1408M



SQUARE
1513M

ASSURED QUALITY



E477011



100% QC



LIMITED
WARRANTY



*Special profiles available upon request.
Contact a Project Specialist for more information.

PROJECT NAME/NO.	PART NUMBER
SPECIFIED BY	NOTE

LUXLINE™

RGB

Indoor Series

MECHANICAL

PARAMETERS

LED Type EPISTAR 2735**LED Count** 24 LEDs/ft (84 LEDs/m)**LED Strip Dimensions** 0.24" (w) x 0.08" (h) [6mm x 2.1mm]**LED Pitch** 0.47" (11.9mm)**LED Strip Width** 0.24" (6mm)**LED Node Size** 2735**Roll Length** 16 ft ³/₈in (5m)

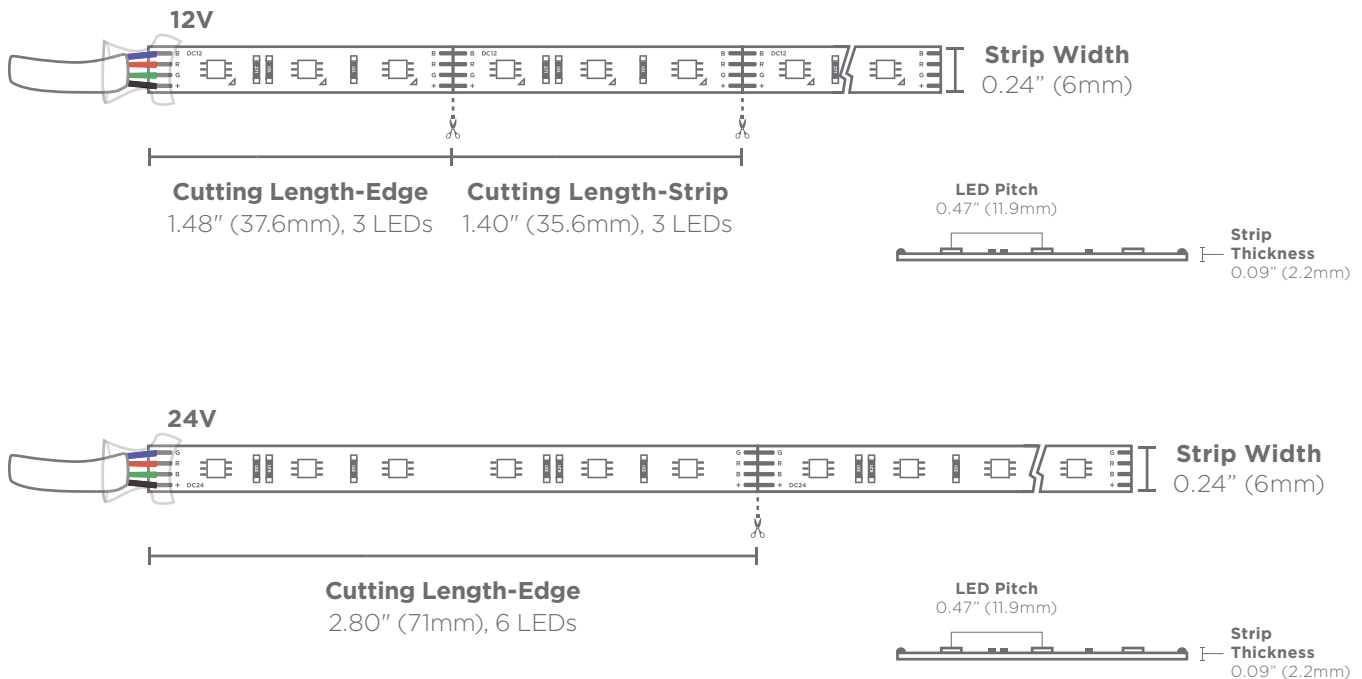
CONSTRUCTION & BASE MATERIAL

Substrate Material Flexible PET**Metal Material** Rolled copper for PCB flexibility

COMPLIANCE & REGULATORY APPROVAL

UL E477011 • cUL E477011 • RoHs • CE • Lead Free • Warranty 5 years

LED STRIP CUTTING DIAGRAM



LED SIZE	OPERATING VOLTAGE	PITCH center-to-center	CUTTING LENGTH	WIDTH	# LEDS per cut section
2735	12V	0.47" 11.9mm	1.41" 35.7mm	0.24" 6mm	3
2735	24V	0.47" 11.9mm	2.80" 71mm	0.24" 6mm	6

PROJECT NAME/NO.	PART NUMBER
SPECIFIED BY	NOTE

LUXLINE™

RGB

Indoor Series

ELECTRICAL

PHOTOMETRICS

Wide Beam Angle 120°**Lamp Life** 50,000+ hours**Standard Color Temperatures** Red 625nm • Green 525nm • Blue 495nm**Lumen Output RGB** 110.67 lm/ft (363 lm/m) • Red 35.67 lm/ft (117 lm/m) • Green 69.51 lm/ft (228 lm/m) • Blue 13.72 lm/ft (45 lm/m)

COMPATIBLE CONTROL

- DMX Control
- Wi-Fi Control for smart devices
- Radio frequency (RF) control
- 0-10V

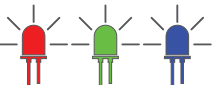

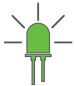

POWER SUPPLY

Input Voltage 12VDC & 24VDC constant voltage**Input Current RGB** 0.17 A/ft (0.56 A/m)**Power Consumption RGB** 3.07 W/ft (10.08 W/m)**Wire Size** 20 AWG 4 Wire**Please Use Only with Class 2 Power Supply****Connector Type** Molex® • Hardwire

SAFETY DISCLOSURES

Electric Code Compliance Please make sure to install LUXLINE™ in accordance with standard national and local electrical codes.**Outdoor Usage** LUXLINE™ is suitable for indoor applications.**Actual Product Color May Vary** Please note that the product color as seen in this specification sheet, photography, and related marketing material for this product may vary slightly from your actual customized product due to photographic and design limitations.**Specifications are Subject to Change Without Notice** While we try to make every effort to inform customers of updates to our products, we reserve the right to make modifications and improvements to our fixture specifications and designs without advance notice.**Manufacturer is Not Liable for Matching Fixtures to Pre-Existing****Fixture Installations** We cannot guarantee matching the CCT appearance, product design, or lumen output for pre-installed fixtures or reorders.

PHOTOMETRIC DATA TABLE

CCT		EFFICACY	BEAM ANGLE	LUMINOUS FLUX	POWER
 RGB Combined		36 lm/W	120°	110.67 lm/ft 363 lm/m	3.07 W/ft 10.08 W/m
 Red 625nm		35 lm/W		35.67 lm/ft 117 lm/m	1.02 W/ft 3.36 W/m
 Green 525nm		68 lm/W		69.51 lm/ft 228 lm/m	1.02 W/ft 3.36 W/m
 Blue 465nm		13.5 lm/W		13.72 lm/ft 45 lm/m	1.02 W/ft 3.36 W/m

PROJECT NAME/NO.	PART NUMBER
SPECIFIED BY	NOTE

LUXLINE™

RGB

Indoor Series

INSTALLATION

Field Cuttable LUXLINE™ RGB is fully field cuttable and may be cut along the designated cutting lines every 1.41" (35.7mm) or every 3 LEDs for 12VDC, 2.80" (71mm) or every 6 LEDs for 24VDC.

Environment Rated IP22 for indoor/dry location applications. For best performance, avoid mounting LUXLINE™ LED strips in direct sunlight, near direct water contact, or by surfaces subject to puddling caused by rainfall or sprinkler sprays. Our craftsmen make every effort to customize and assemble your lighting solution. Even so, dust, debris, water, or moisture may still creep into the adjoining pieces over time.

Custom IP Ratings Available Outdoor application treatment for LUXLINE™ is available upon request. Available IP Ratings include IP65, IP67, and IP68. Please ask a Sales Rep for information.

Operating Temperature -40°F ~ +179°F (-40°C ~ +82°C)

Ambient Temperature -4°F ~ +140°F (-20°C ~ +60°C)

Mounting May be mounted with 3M adhesives. All LUXLINE™ strips feature 3M adhesive on the reverse side of the strip.

Heat Sink Not required for installation.

Avoiding Hotspots To prevent hotspots, we recommend installing LUXLINE at least 1-2" away from the diffuser or illuminated surface.

Connectors LUXLINE™ may be connected with Molex® connectors or hardwire.

Curved Applications LUXLINE™ may be flexed for curved or radius applications to best fit your retail or architectural environment.

APPLICATIONS

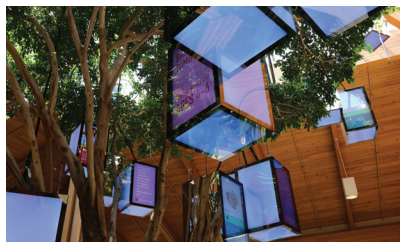
- Stage & Entertainment Accent Lighting
- High-End Residences
- Nightclubs, Restaurants & Theaters
- Theme Park Rides & Attractions
- Indoor Accent Lighting
- Under Cabinet LED Lighting
- Showcase & Bookshelf Lighting
- Retail Merchandising Displays
- Illuminated POP Displays
- Path & Contour Marking
- Signage
- ...And Many More!



ILLUMINATED SIGNAGE



ARCHITECTURAL LIGHTING



EXPERIENTIAL LIGHTING


 ENTERTAINMENT LIGHTING
(MOVIE CONCESSION STAND)

PROJECT NAME/NO.	PART NUMBER
SPECIFIED BY	NOTE

LUXLINE™

RGB

Indoor Series

LUXLINE™ LIGHT STRIP PART NUMBER

EXAMPLE

U84TMN

LUXLINE™

84"

RGB

NO LENS

MOLEX

OPTIONAL

SET

-x2set

SET

BUILD IT!

PRODUCT
LINE

LENGTH

COLOR
TEMPERATURE
(CCT)

LENS

CONNECTOR

FOR REQUESTING MULTIPLE
SETS IN A SERIES ONLY
OMIT IF N/A

PRODUCT LINE

U LUXLINE™ LED LIGHT STRIP

LENS

N NO LENS

SET (OPTIONAL)

-x2set SET (OMIT IF N/A)

LENGTH (IN INCHES)

LL LENGTH

CONNECTOR

H HARDWIRE**M** MOLEX CONNECTOR**C** SPECIAL

COLOR TEMPERATURE (CCT)

T TRICOLOR (RGB)

PROJECT NAME/NO.	PART NUMBER
SPECIFIED BY	NOTE